



# HUBEI SAILIN TECHNOLOGY CO., LTD.

Excellence in Industrial Automation

## Industrial Automation · Smartly Connecting the Future

Flow Meters · LPG Systems · DCS Control · Loading Skids · Terminal Equipment

2026 Product Brochure | Russia · Central Asia · China

Hubei · China | [asia-russia.com](http://asia-russia.com) | [sailintech.com](http://sailintech.com)

<b>01</b>	About Sailin	03
-----------	--------------	----

<b>03</b>	LPG Liquefied Gas Systems	06
-----------	---------------------------	----

<b>05</b>	Oil & Gas Storage Automation	10
-----------	------------------------------	----

<b>07</b>	Terminal Handling Equipment	13
-----------	-----------------------------	----

<b>09</b>	Typical Project Cases	16
-----------	-----------------------	----

<b>02</b>	Flow Meters Series	04
-----------	--------------------	----

<b>04</b>	DCS DISTRIBUTED CONTROL SYSTEM	08
-----------	--------------------------------	----

<b>06</b>	Loading Skids & Cryogenic Systems	11
-----------	-----------------------------------	----

<b>08</b>	Certifications & Qualifications	15
-----------	---------------------------------	----

<b>10</b>	Contact Us	17
-----------	------------	----

## Committed to Providing High-Quality Products and Solutions for Global Industrial Automation

Focuses on Russia and Central Asia Markets · Localized Russian Service · Full-Process Technical Support

### Company Overview

Founded in 2018 and based in Wuhan, Hubei Province, Hubei Sailin Technology Co., Ltd. is a high-tech enterprise specializing in industrial automation product export. The company's main products include flow meters, LPG liquefied gas systems, DCS distributed control systems, and comprehensive oil & gas storage automation solutions.

### Quality Commitment

Sailin Technology adheres to strict supplier selection and quality control systems. All products are ISO 9001 certified. Core products hold CCC, CE, ATEX and other international certifications, ensuring every delivered device meets international standards.

### Market Presence

The company focuses on Russia and Central Asia as core markets, with a comprehensive localized service system. Long-term logistics partner in Russia (7077 KAPГО) ensures timely delivery. Multi-currency settlement (RMB/RUB) eliminates exchange rate risks.

### Service Advantages

Professional Russian-speaking technical team provides 7×24 support; full-process service from product selection, technical design, installation guidance to after-sales maintenance; 1-hour rapid response; customized solution design capability.

**2018**

Established

**60+**

Countries/Regions Exported

**3000+**

Total Clients Served

**20 Years**

Partner Industry Experience



### Electromagnetic Flow Meter

Electromagnetic Flow Meter · SL-LDE Series

Measures conductive fluid flow using Faraday's law of electromagnetic induction. No moving parts, low maintenance. Suitable for water treatment, chemical, food & beverage industries.

Accuracy 0.5 DN15~DN200 CE GOST-R

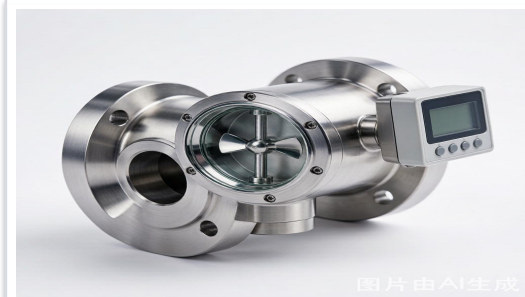


### Vortex Flow Meter

Vortex Flow Meter · SL-LUGE Series

Based on Karman vortex street principle, suitable for steam, gas and liquid flow measurement. High temperature resistant (-40~350°C), robust structure, long service life.

Accuracy 1.0 DN25~DN80 High Temp Wide Range



### Turbine Flow Meter

Turbine Flow Meter · SL-LW Series

Uses fluid-driven turbine rotation for speed measurement with high accuracy and repeatability. Suitable for precise metering of clean liquids and gases, widely used in trade settlement.

High Precision Trade Settlement Fast Response



### Metal Tube Rotameter

Metal Tube Rotameter · H250 Series

Mechanical flow measurement instrument, no external power required. Suitable for on-site indication of small flow gases and liquids. Compact structure, easy installation.

No Power On-Site Small Flow

# 02

## FLOW METERS SERIES

Core Self-Operated Products · High Precision · Multi-Scenario

### Technical Specifications

Model	Diameter Range	Accuracy Class	Pressure Rating	Medium Temperature	Output Signal
SL-LDE (Electromagnetic)	DN15~DN200	0.5	1.6MPa	-20~80°C	4~20mA / RS485
SL-LUGE (Vortex)	DN25~DN80	1.0	2.5MPa	-40~350°C	4~20mA / Pulse
SL-LW (Turbine)	DN10~DN100	0.5	2.5MPa	-20~120°C	4~20mA / Frequency
H250 (Rotameter)	DN15~DN100	2.5	4.0MPa	-40~150°C	On-Site Indication



### LPG Dispenser

LPG Dispenser

High-precision LPG dispensing equipment with explosion-proof mass flow meter, emergency shut-off valve and safety breakaway coupling. Supports IC card payment and station management system integration.

Explosion-Proof IC Payment High Precision



### LPG Storage Tank

LPG Storage Tank

Horizontal/vertical LPG storage tanks, compliant with ASME/GB150 standards, design pressure 1.77MPa. Equipped with safety valve, level gauge, pressure gauge and other safety accessories.

ASME Standard 1.77MPa Safe & Reliable



### LPG Unloading Pump/Compressor

LPG Unloading Pump/Compressor

High-efficiency LPG unloading equipment, vane/screw pump options available. Compressor used for pressure delivery and tank pressurization, ensuring safe system operation.

Efficient Unloading Explosion-Proof Motor Low Noise



### LPG Station Control System

LPG Station Control System

PLC/DCS-based intelligent station control system for tank monitoring, refueling metering, safety interlocking, and remote data transmission. Supports remote monitoring.

PLC Control Safety Interlock Remote Monitoring

## Complete LPG Station Equipment & System Integration

Unloading Pump · LPG Pump · Compressor · Dispenser · Storage Tank · Intelligent Control System

## Complete LPG Station Equipment & System Integration

### LPG System Configuration

System Component	Main Equipment	Key Parameters	Standards
Storage System	LPG Tank, Safety Valve, Level Gauge	5m <sup>3</sup> ~100m <sup>3</sup> , 1.77MPa	GB150 / ASME
Unloading System	Unloading Pump, Compressor, Vapor Line	Unloading ≥8m <sup>3</sup> /h	GB50156
Refueling System	Dispenser, Mass Flow Meter	Accuracy ±0.5%, ExdIIBT4	GB/T 9081
Control System	PLC Cabinet, Touch Screen, Sensors	Siemens/OMRON PLC, Modbus RTU	IEC 61131-2

## DCS — Core Equipment for Industrial Automation

Applicable to petroleum, chemical, power, metallurgy and other process industries · Hardware Selection → Cabinet Integration → Software Configuration → Commissioning

### Hardware System

- Control Cabinet: Standard 19" cabinet, IP54 protection
- PLC: Siemens S7-300/400/1200/1500
- I/O Modules: AI/AO/DI/DO, hot-swap support
- Communication: Profibus-DP, Modbus RTU/TCP
- Power: Redundant supply, UPS backup

### Software Platform

- SCADA Software: WinCC, iFix, KingView
- Control Algorithms: PID, Cascade, Feedforward, Ratio
- Data Management: Real-time / Historical database
- Alarm Management: Multi-level alarm, event logging
- Remote Monitoring: WebAccess, Mobile APP

## 04

# DCS DISTRIBUTED CONTROL SYSTEM

Smart Factory · Intelligent Operation · Safe & Reliable

Item	Technical Specification	Remarks
Control Station CPU	Siemens S7-1518 / HollySys MACS-K	Redundant config optional
Scan Cycle	50ms ~ 1000ms adjustable	Fast loop 50ms
I/O Capacity	Max 2048 points per station	Expandable
Communication Network	Industrial Ethernet + Profibus-DP	Redundant ring network
Power Supply	220VAC ±15% / 24VDC	UPS backup 30min
Operating Temperature	0~50°C (Control Room)	Cabinet with AC
Explosion-Proof Rating	Field Instruments ExdIIBT4 / ExialIC	GB3836 Standard



## Expert in Petrochemical Product Intelligent Storage & Transport Solutions

National Specialized 'Little Giant' · Three Major Oil Companies Supplier · 20 Years Experience · 1700+ Projects



### Truck Loading/Unloading Automation System

Truck Loading/Unloading Automation

Quantitative loading controller + batch controller + loading arm + anti-overflow/anti-static controller. Automatic quantitative loading, receipt printing and data upload. IC card/QR code supported.

Accuracy  $\pm 0.2\%$  Ex Certified IC Card



### Vapor Recovery Unit (VRU)

Vapor Recovery Unit (VRU)

Condensation + adsorption/membrane combined process, VR efficiency  $\geq 95\%$ , emission  $\leq 25\text{g/m}^3$ . Energy-saving VRU-II Plus+ model available.

Recovery  $\geq 95\%$  Energy-Saving ATEX



### Tank Farm Automation System

Tank Farm Automation (SCADA/PLC/SIS)

Tank level, temperature, pressure monitoring; automatic tank gauging; Safety Instrumented System (SIS) for emergency shutdown. Compliant with GB50128, API2350.

SCADA SIS Safety Auto Gauging



### Full-Contact High-Efficiency Sealing Floating Roof

Full-Contact Floating Roof

Full-contact design, floating roof fully contacts liquid surface, eliminates vapor space, reduces VOCs emissions. Suitable for gasoline, naphtha and other light oil storage tanks.

Full-Contact VOCs Reduction Long Life



### Explosion-Proof Skid-Mounted Fuel Station

Skid-Mounted Fuel Station

Integrated fuel tank, dispenser and explosion-proof system in one unit, fully relocatable. Suitable for mines, airports, logistics parks and other temporary fueling sites.

Skid-Mounted Safety Quick Deploy



### Ship-Shore Safety Device

Marine Vapor Recovery Unit

Terminal vapor recovery system for ship loading/unloading vapor treatment. Compliant with GB/T 20739 standard.

Ship-Shore Terminal Safety Interlock

## One-Stop Loading Skid Station Solution

Petroleum / Chemicals / LPG / LNG Full Media Coverage · Prefabricated Skid · Plug & Play



### Top Loading Skid

Top Loading Skid

Single-sided design, width 0.5~1m, length 2~4.5m. Side-mounted loading arm with batch controller, flow meter, control valves and static grounding safety devices.

Side-Mounted Arm 2~4.5m Batch Controller



### Bottom Loading Skid

Bottom Loading Skid

Single/double-sided, length 4~6m. API dry-break coupling, metal hoses, pneumatic/electric hydraulic valves, grounding device, overflow switch, etc.

API Coupler 4~6m Closed Loading

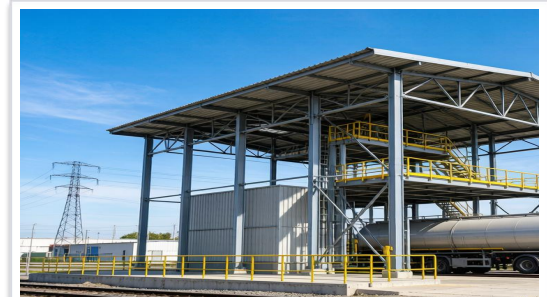


### LNG/CNG Cryogenic Loading Skid

Cryogenic Loading Skid System

Designed for LNG and cryogenic media. Includes liquid/vapor pipelines, emergency shut-off valve, pre-cooling process, nitrogen purge, temperature/pressure transmitters and dedicated LNG batch controller. Operating temperature down to -196°C.

-196°C Pre-Cooling N2 Purge



### Loading Platform

Loading Platform

Steel structure loading platform with canopy, step ladder and safety railings. Three types: railway tank car platform, road tanker platform, and single-column platform.

Steel Structure 3 Types Anti-Corrosion

## Technical Specifications Comparison

Item	Top Loading Skid	Bottom Loading Skid	LNG Cryogenic Skid
Applicable Medium	Petroleum/Chemicals/Alcohols	Petroleum/Alkanes/Hydrocarbons	LNG/LCO <sub>2</sub> /Cryogenic Liquids
Pipe Material	CS 304/316L+PTFE Lined	CS 304/316L+PTFE Lined	SUS316L Stainless Steel
Valve Body Material	Carbon Steel/Stainless Steel	Carbon Steel/Stainless Steel	Stainless Steel (Cryo)
Operating Temperature	-40°C ~ +80°C	-40°C ~ +80°C	-196°C ~ +50°C

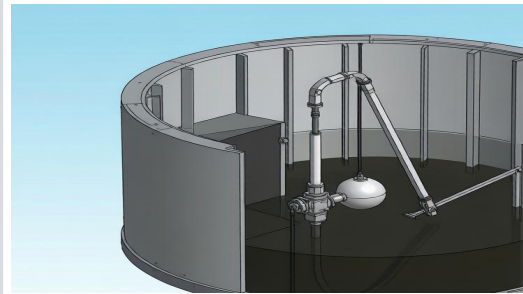


## Folding Boarding Stair

Folding Stair

Safe passage connecting loading platform to tanker top. Anti-slip treads, automatic height adjustment, spring-balanced locking mechanism, chain lock. 3/4/5 steps optional with safety cage.

3-5 Steps Auto-Lock Safety Cage



## Floating Suction Unit

Floating Suction Unit

Floating suction pipe system for bottom oil extraction, automatically rises/falls with liquid level. Draws cleanest liquid from upper layer, avoiding sediment. DN80~DN600.

DN80~DN600 Auto-Level Clean Extraction



## Marine Gangway (Loading Arm Companion)

Marine Gangway / Boarding Ladder

Marine personnel access equipment replacing traditional gangways. Aluminum alloy four-bar front ladder structure, hydraulic drive pitch - 40°~60°, slewing ±90°.

Hydraulic ±90° Slewing 8~35Ton



## Quick Release Mooring Hook

Quick Release Mooring Hook

Specialized mooring release equipment, single hook load 45~200T, with capstan and auto-release. One-touch release of all mooring lines in emergencies.

45~200T Auto-Release ExdIIBT4

## Terminal Equipment Technical Specifications

Product	Key Parameters	Material/Standard	Application Environment
Folding Stair	3~5 steps, tread 600/800mm, load 150kg	Hot-Dip Galvanized / Stainless Steel	Platform / Dock
Floating Suction Unit	DN80~DN600 (3"~24")	CS/SS/Aluminum optional	Petroleum/Chemical Tanks
Marine Gangway	Height 7~20m, power 5.5~16kW	Aluminum + Steel, IP55	Sea/River Port
Quick Release Mooring Hook	Hook 45~200T, speed 15~30m/min	Alloy Steel, ExdIIBT4	Sea Port Mooring

## One-Stop Terminal Solution

Loading Skid → Gangway → Loading Arm → Floating Suction → Quick Release → VRU

## ISO 9001

Quality Management System

## CE Certification

EU Safety Compliance

## GOST-R Certification

Russia Customs Union Certification

## ATEX Explosion-Proof

EU Explosion-Proof Equipment Directive

## Explosion-Proof CCC

China Explosion-Proof Product Certification

## ASME Certification

ASME Standard

## GC2 Pressure Piping Design

China Pressure Piping Design License

## 20+ Utility Model Patents

Core Technology Patents

## 6 Software Copyrights

Liquid Storage Management Software

## Why Choose Sailin?

### Price Advantage

30-40% lower than European/American brands, excellent cost-performance

### Localized Service

Russian-speaking team, 7×24 support, 1-hour response

### Flexible Settlement

Multi-currency settlement: RMB/RUB/USD

### Logistics Guarantee

Russia logistics partner 7077 KAPFO, fast customs clearance

### Full Qualifications

CE/ATEX/GOST-R/CCC Ex - complete international certifications

### Customization Capability

Full process: design, selection, installation, commissioning

# 09

## TYPICAL PROJECT CASES

1700+ Projects · Professional Localized Service

### Russia Project

Russian Federation

Project Type	Oil Depot Loading System
Equipment Config	Batch Controller + Loading Arm + VRU
Project Status	Delivered & Operational
Client Feedback	Stable operation, timely service * * *

### Kazakhstan Project

Kazakhstan · Almaty

Project Type	Oil Depot EPC
System Scale	10,000m <sup>3</sup> tanks ×4
Deliverables	Design + Equipment + SCADA
Project Status	Completed & Operational

### China Domestic Project

China · Hubei Sanning Chemical

Project Type	600kt Ammonia/Glycol Loading
Equipment Config	Quantitative Loading + IC Card
Project Value	10M+ RMB
Delivery Time	2018

### Ghana Project, Africa

Ghana · Kumasi

Project Type	Oil Depot Automation
Deliverables	Tank SCADA + Loading System
Project Status	Delivered

### Iran Project

Iran · ISPC

Project Type	MAH/C5/LPG Skid System
Deliverables	LPG Loading Skid Equipment
Project Status	Delivered

### Philippines Project

Philippines

Project Type	DCS Control System
System Scale	Plant-wide Distributed Control
Deliverables	DCS Hardware + Programming + Commissioning
Project Status	Delivered

# CONTACT US

Hubei Sailin Technology Co., Ltd. · Looking Forward to Cooperation

Phone / WeChat / WhatsApp

**+86 186 6560 8946**

Email

**asia-russia.tao@yandex.ru  
hbsailin@gmail.com**

Address

**Wuhan, Hubei, China**

Website

**www.asia-russia.com  
www.sailintech.com**

Working Hours

**Mon-Fri 9:00 - 18:00**

Logistics Partner (Russia)

**7077 КАРГО**

Hubei Sailin Technology Co., Ltd.

Industrial Automation Export · Russia & Central Asia Market Expert

© 2018-2026 Hubei Sailin Technology Co., Ltd. All Rights Reserved